



El Maximo Ranch Northern Everglades Water Quality Project

This public-private partnership is a regional water quality improvement effort intended to reduce nutrients flowing into Lake Okeechobee.



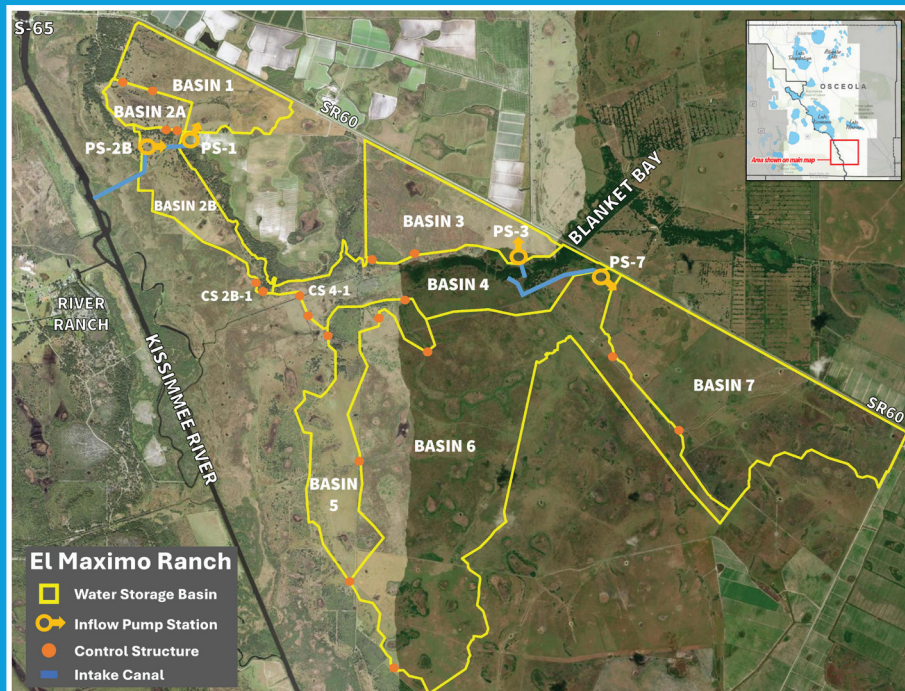
This project is a partnership between the South Florida Water Management District, Florida Department of Environmental Protection, Florida Department of Agriculture and Consumer Services and Garcia Land Management, LLC.

Project Highlights

- ◆ Improve water quality
- ◆ Treat over 32,000 acre-feet of water per year
- ◆ Remove over two metric tons of total phosphorus per year
- ◆ Remove over seven metric tons of total nitrogen per year
- ◆ Four pump stations with a total 350 cfs inflow capacity
- ◆ 19 water control structures
- ◆ More than 27 miles of berms

Project Timeline

- ◆ Construction Start Date: August 2022
- ◆ Construction End Date: December 2024
- ◆ Current Status: Operations and Maintenance



Project Purpose

The project diverts water from the Kissimmee River and Blanket Bay Slough for treatment on approximately 7,000 acres of privately-owned land in Osceola County.

